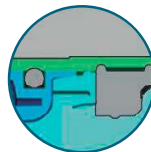
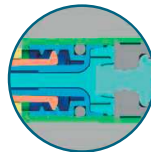


Auto-retractable safety Syringe



Features

- Special structure design:**
 Double layer seal structure to ensure the product does not leak.
 Double position structure for cone to avoid needle loose;
 Small force to pull back plunger.
- Humanization design:**
 Standard cone design, needle can be changed; Double lure lock design for barrel, signal is clear for pulling back plunger to place.
- Auto-disable features:**
 Push plunger into the bottom of barrel, it can push needle into barrel when pulling back plunger; It is easy to break plunger into two segments by hand when plunger pulled at the barrel stopper.



Operation process



1 Suck medicine and push the plunger eliminating the air in the barrel .



2 Push back the plunger to the stopper of the barrel.



3 Break the plunger.



4 Complete retraction and self-destruction.

Specifications

Syringe Capacity	Needle	
	Gauge	Length
1.0ml	26G	1/2"(13mm)
1.0ml	29G	1/2"(13mm)
3.0ml	22G	1.0"(25mm)
5.0ml	22G	1.0"(25mm)
10 ml	22G	1.0(25mm)

▲ Oem & odm are available on request.